



Goals and Action Strategies

INTRODUCTION

The culmination of the planning process has led to the development of a series of goals and action strategies that represent the County's Guiding Principles as shown below. Built on the premise that the Department of Parks and Recreation will provide leadership for the implementation of each goal by collaborating with others to leverage resources, by incorporating sustainable management and maintenance concepts into each project, and by continuing to actively solicit citizen input into the key initiatives that are spelled out in this master plan, the Platte County Park System in 2030 will represent the "preferred future" that has been envisioned since the initial master plan was developed in 2000.

The funding and development of projects included in the Park System Master Plan are about to become a reality. In that regard, we will:



Protect our natural resources



Provide health and wellness opportunities



Create safe recreation places for children



Goals and Action Strategies



GUIDING PRINCIPLE: PROTECT NATURAL RESOURCES

Goal: Protect Platte County open space by acquiring land for conservation and recreation

Action Strategies:



Protect a minimum of 400 acres of open space in perpetuity; work with community partners to protect more



Seek out best opportunities which promote the conservation of open space in areas under development pressure, are of unique natural value, and will help protect the clean waters of Platte County



Pursue land acquisitions that will enhance opportunities for community parks and passive recreation areas





Goals and Action Strategies

GUIDING PRINCIPLE: PROTECT NATURAL RESOURCES

Goal: Protect and improve water quality and stormwater infrastructure to promote a healthy, sustainable community

Action Strategies:



Seek opportunities to protect property along Platte County streams and rivers through acquisition and conservation easements



Incorporate water quality environmentally friendly planning and materials in new park projects



Continue Stormwater Program with funding through dedicated tax; continue the Stormwater Grant Program



Proactively seek to protect public infrastructure, public safety, public lands, and environmentally sensitive areas from damage due to flooding, stormwater erosion, and infrastructure failure



Actively seek multi-benefit parks, public works, and stormwater projects that protect our natural resources and utilize Stormwater Best Management Practices (BMP's)



Provide education and access to programs such as the Household Hazardous Wastes Collection Program, Platte County Green Build Program and other programs which seek to protect our water quality



Goals and Action Strategies



GUIDING PRINCIPLE: PROVIDE HEALTH AND WELLNESS OPPORTUNITIES

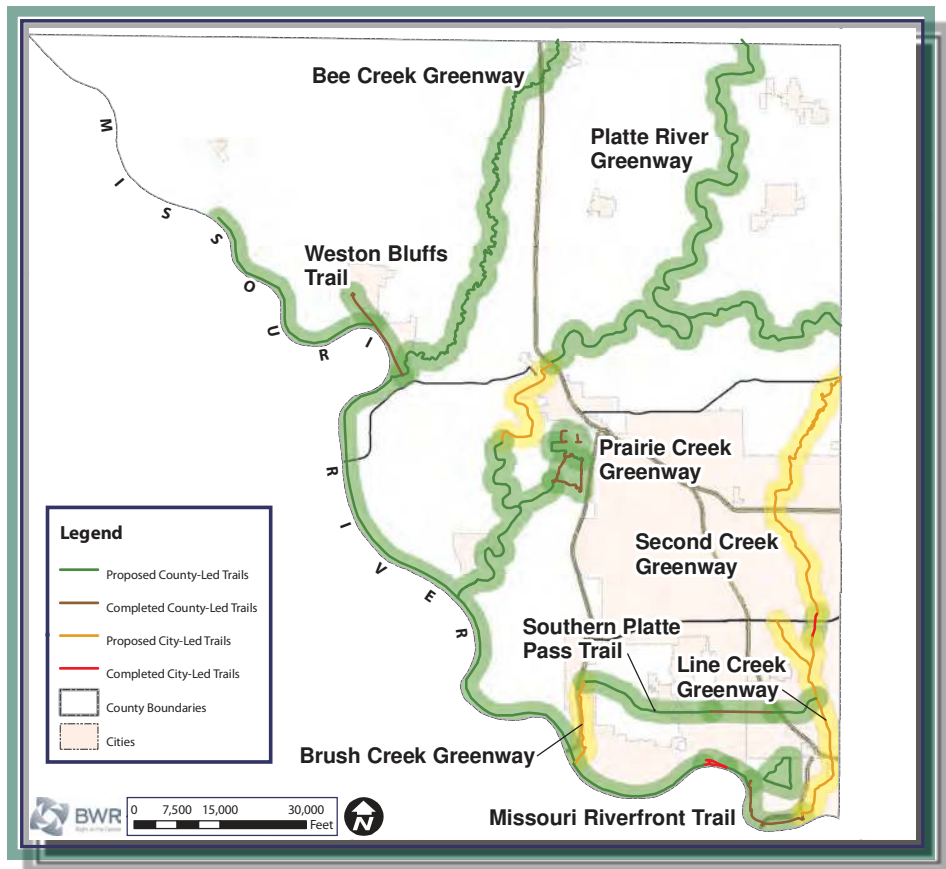
Goal: Expand greenway trails network

Action Strategy:



Increase miles of new trails for walking, running, and bicycling through priority, interconnected corridors including:

- The southern Platte County “loop” of the Missouri Riverfront Trail, the Brush Creek Greenway, Southern Platte Pass (along 45 Hwy) and the Line Creek Trail
- Platte River Greenway Trails
- Prairie Creek and Bee Creek Greenway Trails





Goals and Action Strategies

GUIDING PRINCIPLE: PROVIDE HEALTH AND WELLNESS OPPORTUNITIES

Goal: Create new trail experiences

Action Strategy:



Collaborate with the private sector, cities and the State of Missouri to facilitate enhanced public access to priority trail locations and conservation areas to create a diverse network of pathways in the county including:

- bridle (horse) trails
- paddle (canoe/kayak) trails
- backpacking trails
- mountain bike paths



“Platte County residents that are equestrian trail riders have to trailer their horses to locations outside of Platte County in order to enjoy public equestrian trails.”

– Leslie French
Equestrians Focus Group
December 2, 2008



Goals and Action Strategies



*“Maintenance
has to be our
number one
priority.”*

– Youth Sports and Recreation
Programs Focus Group
November 18, 2008

GUIDING PRINCIPLE: PROVIDE HEALTH AND WELLNESS OPPORTUNITIES

Goal: Enhance community parks

Action Strategies:



Continue the development of large community parks with high value amenities:

- Special areas for music and arts
- Trails
- Picnic areas
- Playgrounds
- Dog parks
- Fishing areas
- Un-programmed open space and special areas for music, arts, and cultural heritage sites



Continue to implement the existing individual park site master plans at Platte Ridge, Green Hills, and Platte Purchase

- existing individual park site master plans will be revisited and updated as needed with new priorities identified in this master planning process



Evaluate opportunities and create new master plans for community parks at existing land-banked, county-owned parkland:

- new parkland west of English Landing Park in Parkville
- 52nd and Northwood Road near Riverside
- P Hwy and Spratt Road near Weston





Goals and Action Strategies

GUIDING PRINCIPLE: PROVIDE HEALTH AND WELLNESS OPPORTUNITIES

Goal: Ease crowding at Community Centers and plan for long-term growth

Action Strategies:



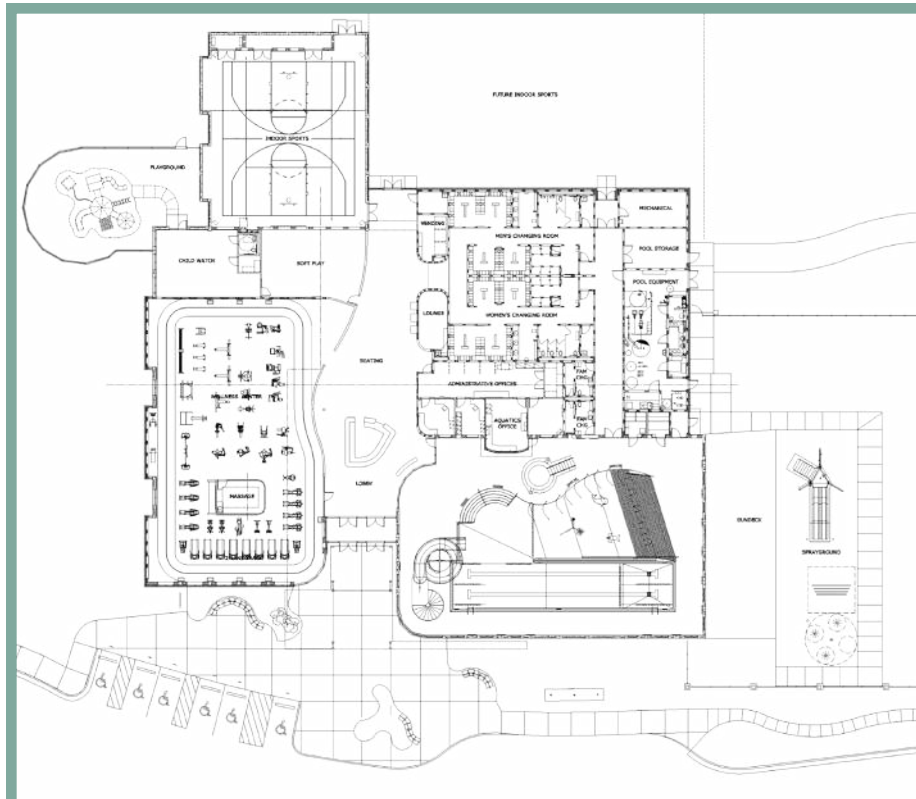
Study expansion opportunities for existing facilities to address community growth and evolving needs

- Priority elements: dedicated aerobics rooms, flex/meeting room space, a larger gymnasium, and aquatics (family leisure and lap lanes)



Study the feasibility of new facilities to ease overcrowding at existing facilities and plan for long term growth

- Priority Elements: wellness/cardio area, indoor family leisure pool with lap lanes, aerobics space, flex/meeting room space, walking track, gymnasium



Goals and Action Strategies



GUIDING PRINCIPLE: PROVIDE HEALTH AND WELLNESS OPPORTUNITIES

Goal: Improve Shiloh Springs Golf Club

Action Strategy:



Provide a value-oriented, well maintained golf facility offering high quality recreational programs which produces revenue to offset operating and capital expenses.

- Excellent customer service and diverse golf programs
- High quality maintenance and playing conditions
- A financial framework for long term success with funding for course improvements and a capital equipment replacement program



"I think Shiloh Springs is good for the long term future of Platte County."

*– Shiloh Springs Focus Group
June 18, 2008*





Goals and Action Strategies

GUIDING PRINCIPLE: CREATE SAFE RECREATION PLACES FOR CHILDREN

Goal: Create new recreational facilities designed especially for Platte County youth

Action Strategies:



Expand outdoor parks and recreational facilities for kids including:

- Underserved organized youth sports such as soccer and football
- Diverse interactive facilities that support lifetime learning and wellness (e.g. interactive playgrounds and lifetime sports)



Participate with partners to further study the need and feasibility of new indoor facilities which benefit children (e.g. sports centers, ice rinks, and competitive pools)



“Providing more opportunities for our children is the best thing we can do to improve economic development, from an employer standpoint, in Platte County.”

– Business Roundtable
Focus Group
November 14, 2008

Goals and Action Strategies



GUIDING PRINCIPLE: CREATE SAFE RECREATION PLACES FOR CHILDREN

Goal: Support positive sports and wellness programs that promote active learning and provide youth mentoring opportunities

Action Strategies:



Collaborate with community partners to enhance a diverse network of opportunities for Platte County youth. Identify best opportunities for offering programs focusing on lifetime learning (e.g. sports, wellness, arts, culture)



Create a “sports commission” type cooperative and study new opportunities to share information, promote collaboration between community organizations, and the development of more enhanced opportunities for children





Goals and Action Strategies

SUSTAINABLE

To achieve our goals, we will create a sustainable park system, providing maintenance and security of parks and facilities at levels that meet and exceed citizen expectations and incorporate green solutions into each phase of the park/facility development process

ACTION STRATEGIES

- Renew the dedicated parks sales tax
- Leverage other resources required to provide for the long term maintenance needs of the county operated parks and facilities
- Work with the Sheriff's Department and other emergency response agencies to continue patrols of park facilities and develop a safety audit and security program. Increase visibility of staff and security patrols in parks
- Develop and enforce adopted park planning, construction, maintenance, and operation standards which address citizen expectations for daily conditions and all possible types of energy saving measures
- Provide training and resources for maintenance staff and develop a five-year equipment budget



“Platte County is setting a high standard relative to regional leadership on green issues; others are monitoring what we are doing and wanting to catch up”.

*– Steve Rhoades, Partnerships and Sustainability Focus Group
November 12, 2008*



Goals and Action Strategies



COLLABORATIVE

To achieve our goals, we will actively seek partners who share a common vision for the joint pursuit of quality projects and programs of which citizens are most supportive

ACTION STRATEGIES

- Expand the Outreach Grant Program
- Leverage sales tax proceeds with partner contributions and state, federal and private sector grants
- Establish standards for collaboration with partners for facilities and programs
- Create a volunteer corps and support programs to engage the community and create personal ownership in the park system





Goals and Action Strategies

CITIZEN-FOCUSED

To achieve our goals, we will always stay citizen-focused and actively involve citizens in the success of the park system and constantly communicate the benefits and services provided through parks and recreation

ACTION STRATEGIES

- Promote the value and benefit of the park system to our quality of life
- Partner with the business community to promote health, wellness and quality of life benefits of parks and recreation and including the economic impact resulting from a strong park program
- Prioritize citizen involvement as a high need through the Parks Board and regular public participation and feedback opportunities and the development of performance measures to gauge satisfaction
- Increase visibility/awareness of County park facilities and programs through a comprehensive outreach/communications program taking advantage of such opportunities as quarterly park-specific newsletters and other print and photo media

